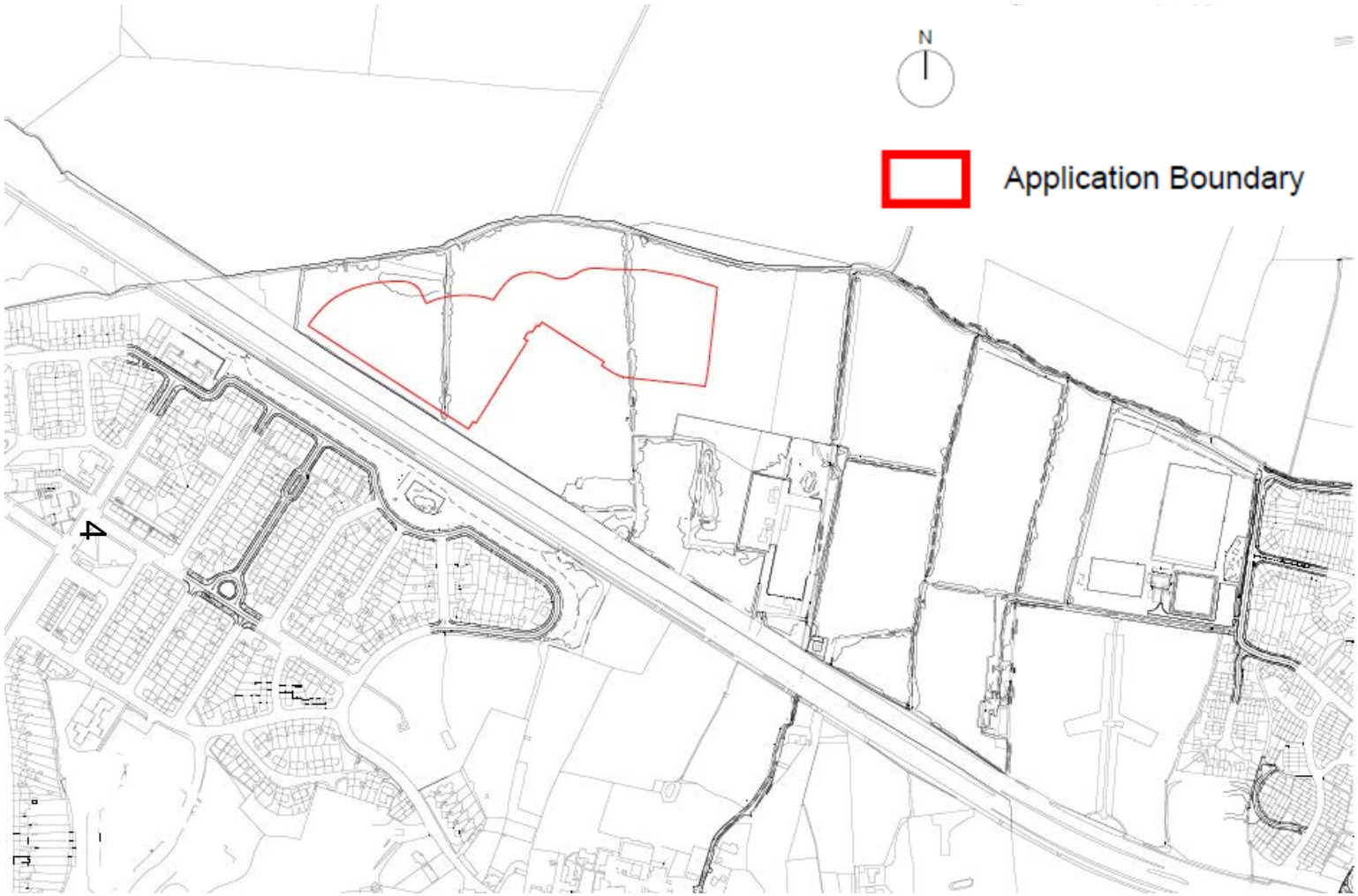


# Welcome to the East Area Planning Committee

- This planning committee meeting is held in public but it is not a public meeting.
- There will be an opportunity for the public to address the committee on each application.
- If you wish to speak for or against a planning application, you need to have either requested it in advance, or hand in one of the available speaker forms, or speak to the clerk.
- Information on meeting protocol and conduct at the committee is set out in the Code of Practice.
- This is in the committee agenda just before the first planning application report.



[www.oxford.gov.uk](http://www.oxford.gov.uk)



Site Location Plan



Site Plan

[www.oxford.gov.uk](http://www.oxford.gov.uk)



Secondary Greenway Homes

Greenway East Apartments

Greenway West Homes & Apartments



Northway Urban Block



Podium Garden Level



[www.oxford.gov.uk](http://www.oxford.gov.uk)





Typical Floor Plan



Northway Urban Block



∞

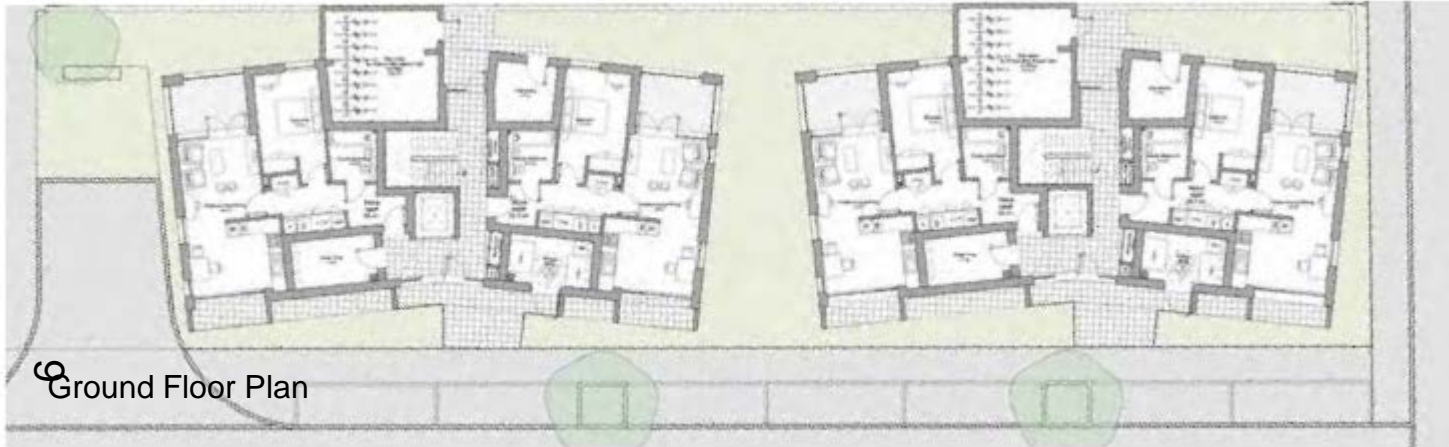
Elevation facing A40



Northway Apartment Buildings



Typical Floor Plan



Ground Floor Plan



Street Elevation

[www.oxford.gov.uk](http://www.oxford.gov.uk)



Northway Apartment Buildings



View of the A40 frontage looking west towards the junction



10

View along the urban block edge towards the commercial centre







Ground floor plan





Street elevation looking west



Street elevation looking north



Northway Apartment Buildings



Aerial view



View from site entrance



West and East Lantern Building



[oxford.gov.uk](https://www.oxford.gov.uk)





East Lantern Building being Affordable



West Lantern Building being Private

**TYPE A**

Typical Floor plan (Floor 1-3)  
Scale 1:100  
2 Bedroom flat with generous living room/kitchen with a wrap around balcony. The ensuite is converted into storage room in the East Lantern.



**TYPE B**

Typical Floor plan (Floor 1-3)  
Scale 1:100  
2 Bedroom flat with generous living room/kitchen with an inset balcony.



**OXFORD  
CITY  
COUNCIL**



West and East Lantern Building



Eastern Lantern Building walking along Primary Street. The entrances are highlighted with a green glazed tile



16



Western Lantern Building walking along Primary Street.



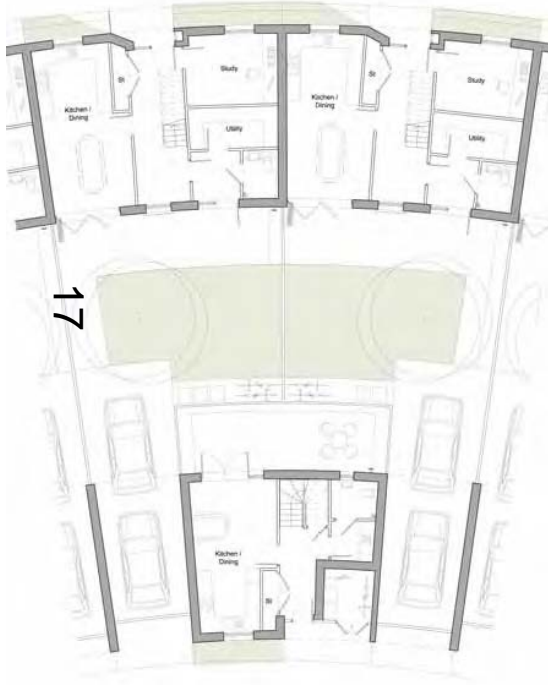
Crescent Houses



First Floor



Ground Floor



Ground Floor

[www.oxford.gov.uk](http://www.oxford.gov.uk)



**OXFORD  
CITY  
COUNCIL**



Crescent Houses



View of inner crescent from Gladstone Gardens



View of Crescent Houses along Primary Street





Linear Park Villas



View from linear park edge



19



Ground Floor Plan



First Floor Plan



Second Floor Plan



Roof Plan



Waterfront Villas



[www.oxford.gov.uk](http://www.oxford.gov.uk)



20



Ground Floor Plan



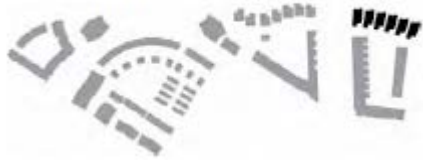
First Floor Plan



Second Floor Plan



Waterfront Villas



21

View Linear Park walking east

[www.oxford.gov.uk](http://www.oxford.gov.uk)



**OXFORD  
CITY  
COUNCIL**





22



Second floor



Roof plan



Ground floor



First floor

Primary Square Terrace

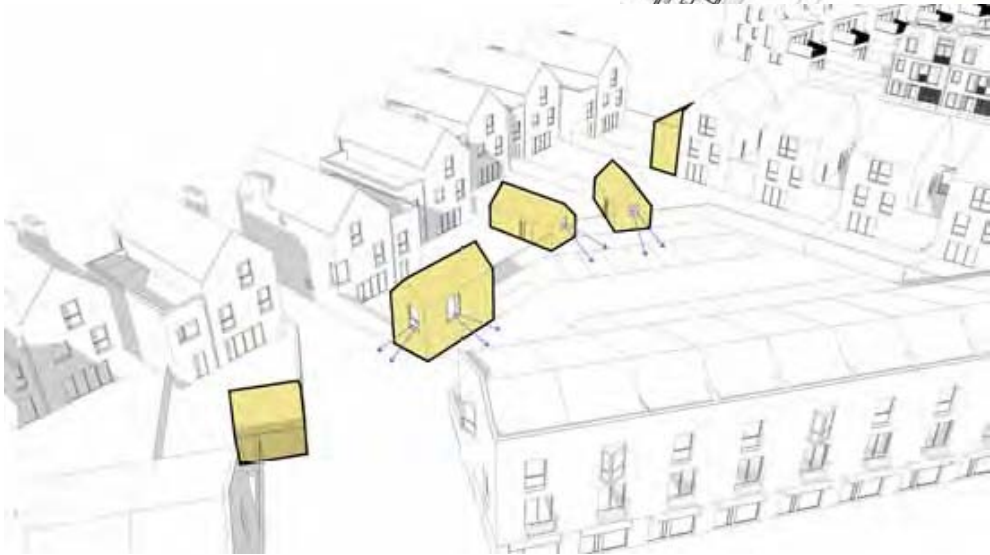


oxford.gov.uk



View of the Primary Square Terrace

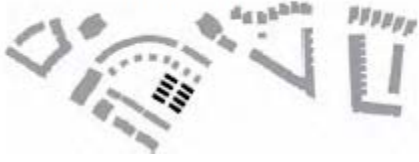
Wick Mews Annexe Buildings





25

View through Wick Mews



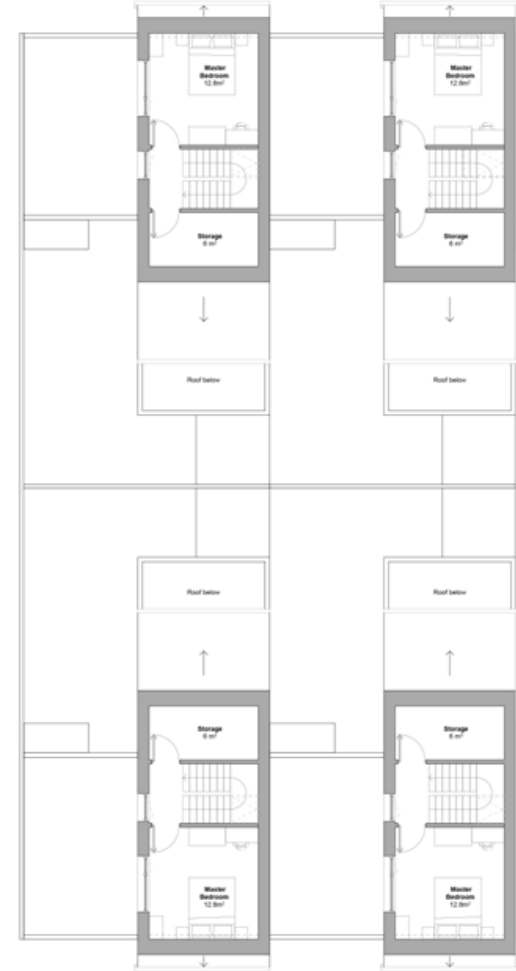
26



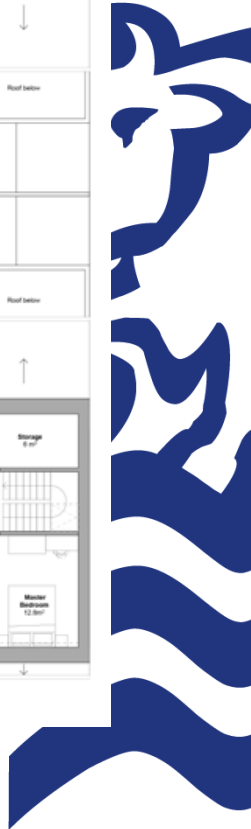
Ground floor



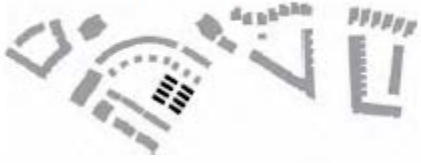
First floor



Second floor





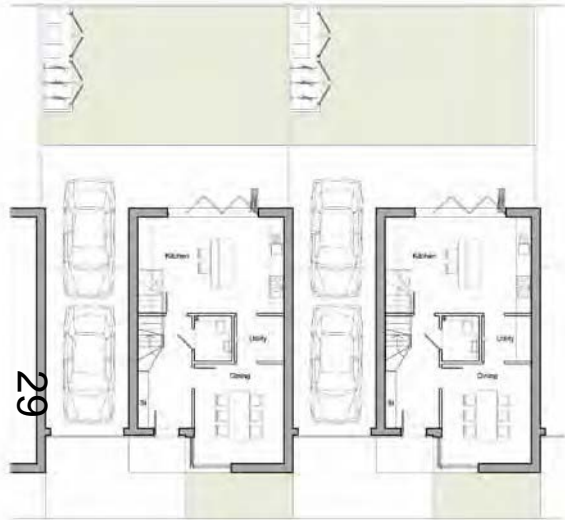


27

View of Gladstone Lane Houses from Gladstone Garden







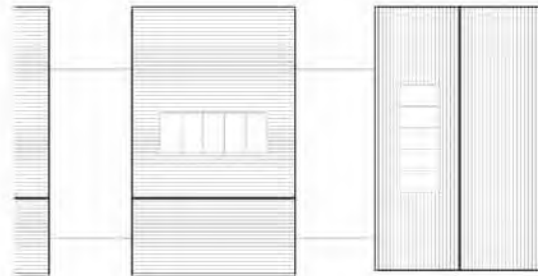
Ground floor



First floor



Second floor



Roof plan



Greenway West Houses



Greenway West Apartments



Typical Upper Floor Plan



Ground Floor Plan



View from north of greenway



View from south of greenway



Greenway Terrace



Key Plan

3 storey terraced house with under-croft parking  
3 bedrooms + study



Ground floor  
Scale 1:200



Second Floor Plan  
Scale 1:200



First Floor Plan  
Scale 1:200



3D Perspective front



3D Perspective rear



Section - back to front  
Scale 1:200





View to the Greenway looking north

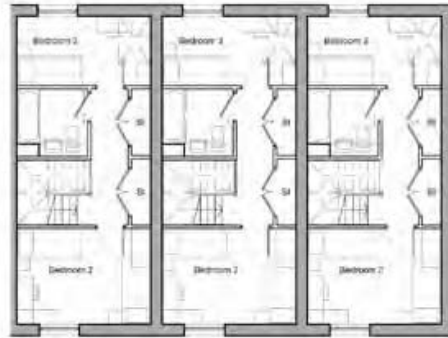


Street elevation west facing side of Greenway

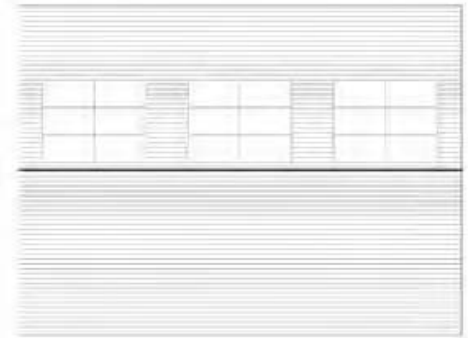




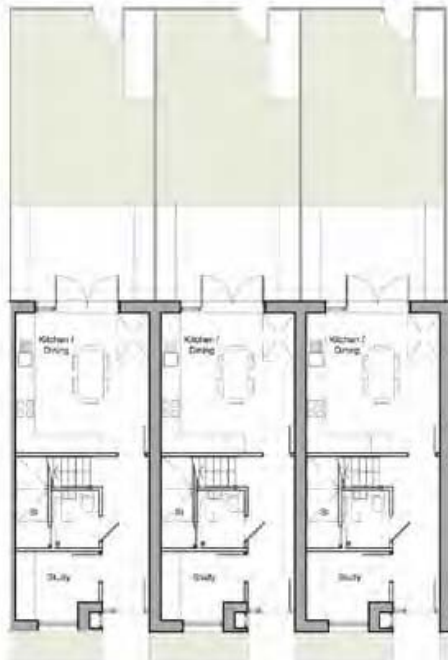
33



Second floor



Roof plan



Ground floor



First floor





View of Secondary Greenway



Street elevation looking west

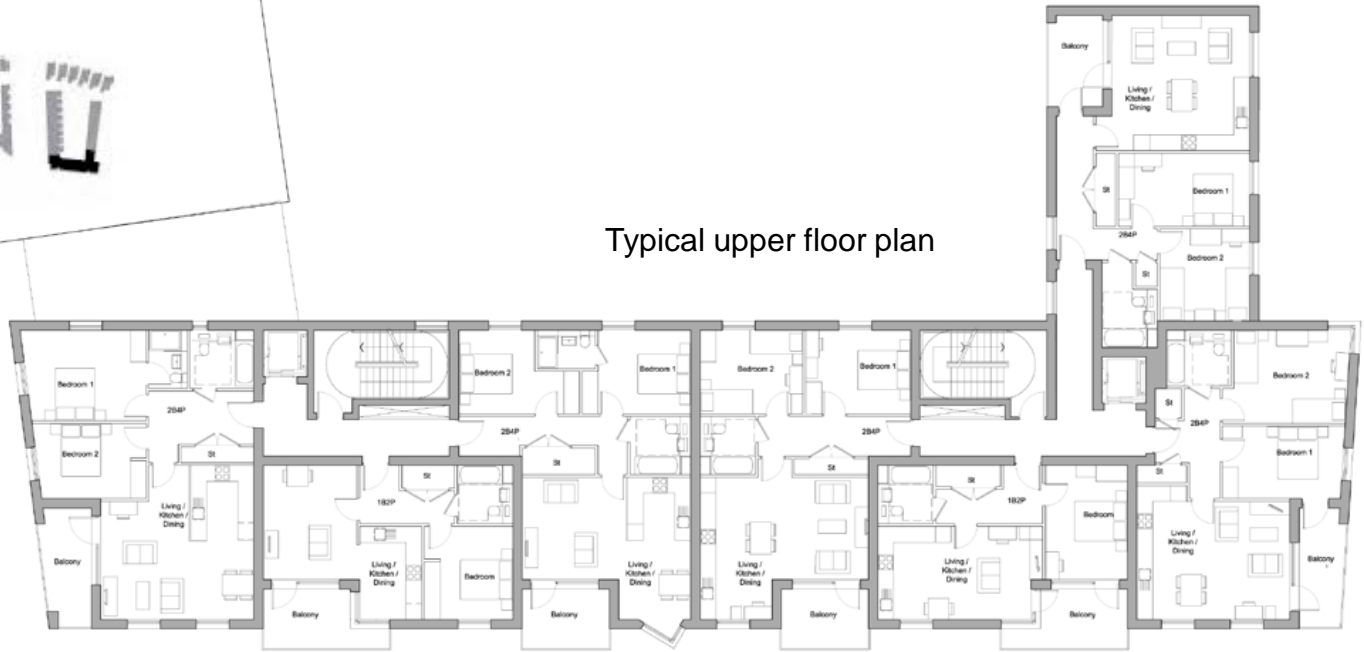




Greenway East Apartments



Typical upper floor plan



35

Ground floor plan



Greenway East Apartments



View of Greenway apartments from primary street



36



Street elevation looking north



# Dwelling Mix



- 1 & 2 bed apartments
- 2 bed houses
- 3 bed houses
- 4 bed houses
- 5 bed houses

[www.oxford.gov.uk](http://www.oxford.gov.uk)





# Tenure

-  Private
-  Affordable



39




## Building heights and roofscape

- 1 storey
- 2 storeys
- 3 storeys
- 4 storeys
- 5 storeys





## Vehicle access and parking

-  On-plot
-  On-street allocated
-  On-street unallocated





Example of bikes fitting in garage. Additional space to the garage size has been provided

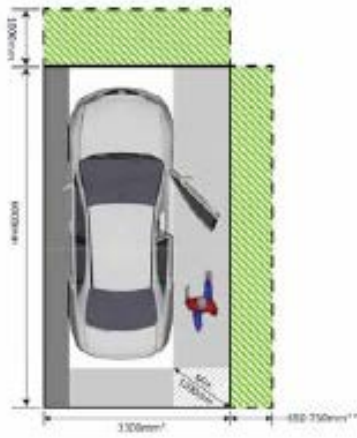


Diagram from 'Cycle Parking for New Residential Developments'



Stacked bike system for apartment buildings



Example of bike storage in a garden shed at the rear of a property

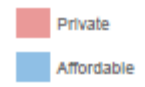


Example of bike store in an apartment building with a stacked bike system





Inclusive access











43

# Waste management strategy

-  Refuse truck movement
-  Reversing of refuse truck
-  Communal refuse
-  Individual refuse





Example of a bin store solution for an individual home. Concealed from the street but conveniently located for residents and refuse collector

## Refuse strategy



Example of a bin store solution in an apartment building. A porch covers the route from the entrance to the bin store.

